

## 2°C~8°C Pharmacy/Lab Refrigerator

*New Product*

*Intelligent Control & Constant Temperature*

*Multiple Alarms Bring More Security*



### YC-650L

#### Real Air Cooling

The multi-duct vortex refrigeration system and finned evaporator can prevent frosting completely and improve temperature uniformity to a large extent.

#### Real Energy Saving

The refrigerator is equipped with "M + Energy Core" power management system and complete air cooling design, improving energy saving efficiency by more than 40%.

#### Real Visibility

The electrical heating + LOW-E design with double considerations can achieve a better anti-condensation effect for the glass door.

#### Real Safety

6 temperature probes can ensure high precision of temperature control with nearly no fluctuation and thus can improve safety.



### Intelligent Temperature Control

- High-precision microcomputer temperature control system with built-in control/alarm sensors for High/low temperature, ambient temperature and evaporator temperature etc. ensuring the safe and stable running.
- 1 inch high brightness digital temperature display with 0.1°C display precision; the temperature can be set freely.



### Security System

- The well-developed audible & visual alarm system with multiple audible & visual alarm functions: high temperature alarm, low temperature alarm, sensor failure alarm, door ajar alarm, power failure alarm etc;
- The turn-on delay and stopping interval protection function can ensure reliability in running;
- The door is equipped with a lock, preventing it from opening accidentally.
- Refrigerator programmed to alarm again if alarm event still existed 30mins after Mute-on, this can help avoid any unknown alarm event to happen.



### Refrigeration System

Equipped with a compressor supplied by an international famous Secop brand, high-efficiency air-cooled condenser and finned evaporator, ensuring fast refrigeration.

### Optional chart recorder

- This technology provides you with temperature recorders without electronics.
- No power supply is required.
- European imported brand, durable and reliable



### Data Storage

- Equipped with a USB export interface, which can be used for exporting data in PDF;
- When a U-disk is connected, temperature data can be stored continuously and automatically (data can be stored for 100,000 sets of data);
- The printer is optional.



### Lighting System

Equipped with lighting system with LED lights, ensuring high visibility inside the cabinet.



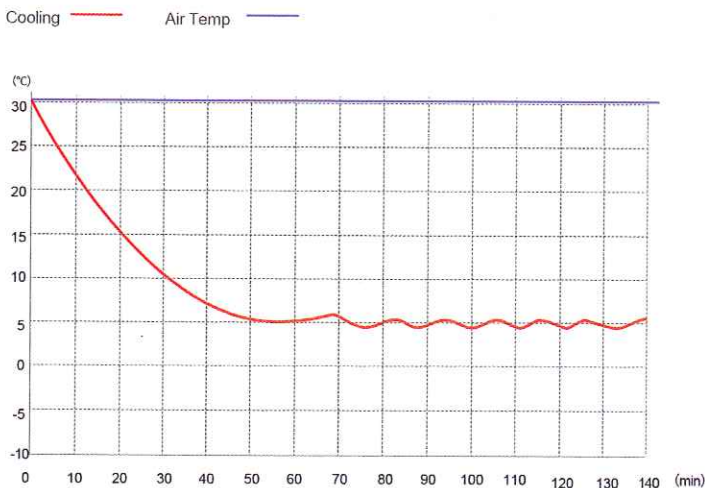
### Human-oriented

- Equipped with high-quality shelves made from PVC-coated steel wire, which are easy to clean;
- Aluminum door handle, easy to open, easy to move.
- Equipped with testing port, bringing convenience to users in testing temperature inside the cabinet.

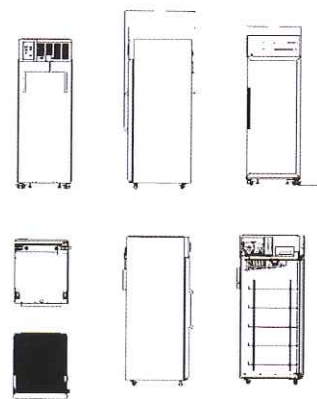
## ✓ Scope of Application

Suitable for storage of biological products, vaccines, drugs, reagents, etc. Suitable for use in pharmacies, pharmaceutical factories, hospitals, centers for disease prevention & control, clinics, etc.

## 🔗 Performance Data / Cooling Curve



## 📏 External Dimensions



2~8°C Pharmacy Refrigerator	
Model	YC-650L
Cabinet Type	Upright
Capacity(L)	650
Internal Size(W*D*H)mm	605*725*1515
External Size(W*D*H)mm	715*941*1985
Package Size(W*D*H)mm	773*947*2153
NW/GW(Kgs)	142/185
Performance	
Temperature Range	2~8°C
Ambient Temperature	16-32°C
Cooling Performance	5°C
Climate Class	N
Controller	Microprocessor
Display	Digital display
Refrigeration	
Compressor	1pc
Cooling Method	Air cooling
Defrost Mode	Automatic
Refrigerant	R290
Insulation Thickness(mm)	55
Construction	
External Material	PCM
Inner Material	Stainless steel/Aluminum plate with spraying(optional)
Shelves	5(coated steel wired shelf)
Door Lock with Key	Yes
Lighting	LED
Access Port	1pc. Ø 25 mm
Casters	4 (2 casters with brake)
Data Logging/Interval/Recording Time	USB/Record every 10 minutes / 2 years
Door with heater	Yes
Alarm	
Temperature	High/Low temperature, High ambient temperature
Electrical	Power failure , Low battery
System	Sensor failure, Door ajar, Built-in USB datalogger failure, Communication failure, Condenser overheating
Electrical	
Power Supply(V/HZ)	220-240~50/60
Rated Power(W)	430
Power Consumption(KWh/24h)	4.73
Rated Current(A)	3.06
Accessory	
Standard	RS485, Remote alarm contact, Backup battery
Options	Printer, Chart Recorder

\*The model, parameters and performance specified in this brochure may be changed without prior notice because of product upgrading.

\*There may be differences between the product images shown in this brochure and the actual products. When you are buying any product, please check the actual product.