

# -40°C Ultra-low Temperature Freezer

*Compressor Supplied by a Famous International Brand*

*One-key Fast Cooling*



## DW-FW150

### Refrigeration System

- The Freon-free refrigerant, compressor supplied by an international famous brand and EBM fan can guarantee fast cooling and are energy-saving and environmentally friendly;
- The CFC-free Polyurethane foaming technology can ensure great thermal insulation performance.

### Temperature Control System

The high-precision microcomputer temperature control system and platinum resistor temperature sensors ensure more precise temperature control.

### People-oriented Design

- The high-quality steel plate structure, corrosion-resistant phosphate coating and stainless steel liner are low temperature tolerant and corrosion-resistant.;
- The low noise design can create a comfortable work environment.





### Temperature Control System

- High precision microcomputer temperature control, more accurate;
- Chamber temperature can be set within a range from -20 to -40°C;
- High-precision microcomputer temperature control system and platinum resistor temperature sensors ensure more precise temperature control.



### Refrigeration System

- HCFC-free refrigerant, compressor supplied by Secop (previously Danfoss) and EBM fan can guarantee fast cooling and are energy-saving and environmentally friendly;
- CFC free polyurethane foaming technology, perfect insulation performance. Hot gas surrounding line to prevent from condensation.



### Security System

- The start delay and stopping interval protection function can ensure reliable operation;
- The well-developed security system with multiple audible & visual alarm function: sensor failure alarm, high & low temperature alarm, power failure alarm, low battery alarm, door open alarm and condenser overheated alarm to ensure the safety sample storage;
- Door with key lock to prevent opening without permission.
- 72 hours back-up battery for display and alarms system during power failure for supportive safety notification.



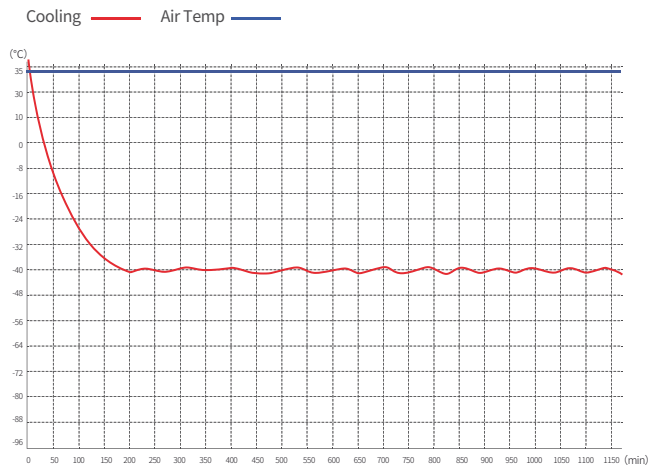
### Human-oriented

- The design of upward door opening and the alancing door hinge facilitate door opening;
- High quality phosphate steel structural coating, stainless steel lining and easy cleaning, low noise design, 4 universal casters for easy movement, equipped with door locks to ensure sample safety.

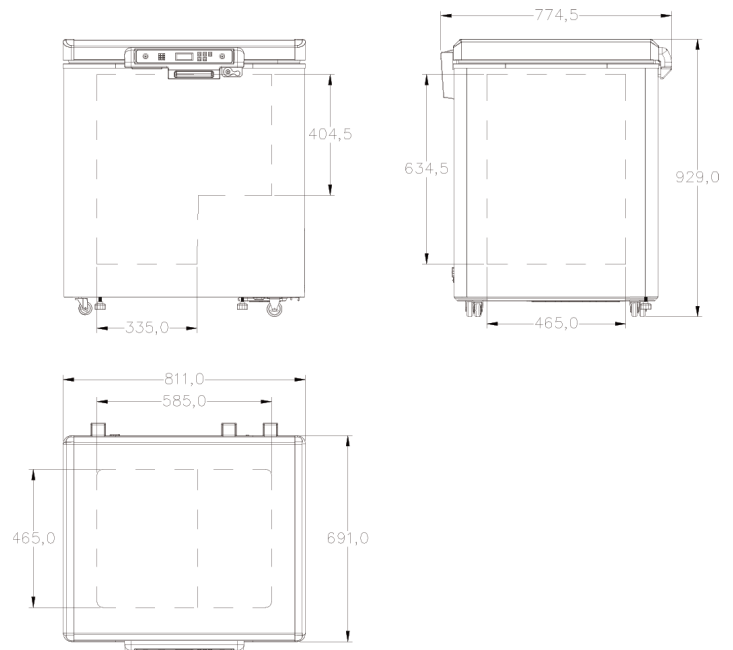
## Scope of Application

Suitable for use in blood banks, hospitals, health and disease prevention systems, research institutions, colleges & universities, the electronic industry, biological engineering, laboratories in colleges & universities, military enterprises, deep-sea fishing companies, etc.

## Performance Data / Cooling Curve



## External Dimensions



## Specification Chart

<b>-40°C Ultra-low Temperature Freezer</b>	
<b>Model</b>	DW-FW150
<b>Cabinet Type</b>	Chest
<b>Capacity(L)</b>	150
<b>Internal Size(W*D*H)mm</b>	585*465*651
<b>External Size(W*D*H)mm</b>	811*775*929
<b>Package Size(W*D*H)mm</b>	905*810*991
<b>NW/GW(Kgs)</b>	60/67
<b>Performance</b>	
<b>Temperature Range</b>	-20~-40°C
<b>Ambient Temperature</b>	16-32°C
<b>Cooling Performance</b>	-40°C
<b>Climate Class</b>	N
<b>Controller</b>	Microprocessor
<b>Display</b>	LED
<b>Refrigeration</b>	
<b>Compressor</b>	1pc
<b>Cooling Method</b>	Direct cooling
<b>Defrost Mode</b>	Manual
<b>Refrigerant</b>	R290
<b>Insulation Thickness(mm)</b>	110
<b>Construction</b>	
<b>External Material</b>	Spray cold rolled steel plate
<b>Inner Material</b>	Stainless steel
<b>Coated Hanging Basket</b>	1
<b>Door Lock with Key</b>	Yes
<b>Access Port</b>	1pc. Ø 25 mm
<b>Casters</b>	4
<b>Data Logging/Interval/Recording Time</b>	USB/Record every 10 minute / 2 years
<b>Backup Battery</b>	Yes
<b>Alarm</b>	
<b>Temperature</b>	High/Low temperature
<b>Electrical</b>	Power failure
<b>System</b>	Sensor error
<b>Electrical</b>	
<b>Power Supply(V/HZ)</b>	220/50
<b>Rated Power(W)</b>	228
<b>Input Power(W)</b>	288
<b>Power Consumption(KWh/24h)</b>	2.32
<b>Rated Current(A)</b>	1.31

\*The model, parameters and performance specified in this brochure may be changed without prior notice because of product upgrading.

\*There may be differences between the product images shown in this brochure and the actual products. When you are buying any product, please check the actual product.