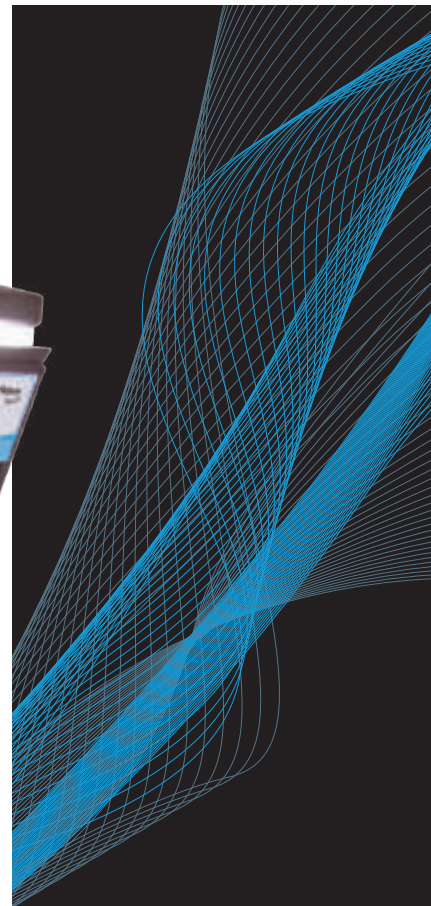




# Captair Flow Smart

Vertical laminar flow cabinet

Providing an ultra-clean, dust free enclosure



# Captair Flow Smart

Vertical laminar flow cabinet

**SMART TECHNOLOGY**  
Simple, intuitive  
communication  
by light showing  
the status of the  
workstation

High efficiency  
particulate filter  
HEPA H14 or ULPA U17

Air flow  
monitoring

Internal LED  
lighting > 800 Lux

UV-C Germicidal lamp

Ergonomic slanted  
design for comfortable  
and safe working position

UV Safety switch

Easy to clean worktop  
(chemical resistant laminate  
or stainless steel)



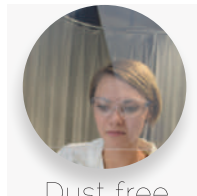
Download the eGuard  
App for remote control  
and monitoring



Life in the laboratory becomes simpler and safer

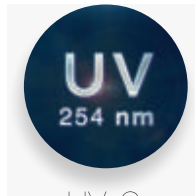
# To protect sensitive samples against airborne contamination

**Captair Flow Smart Vertical laminar flow cabinets** are designed for tissue culture, non-pathogenic biological samples, food microbiology, cell culture, semi-conductor assembly, .....



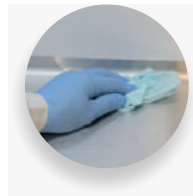
Dust free workstation

- Protection against dust contamination
- Internal dust-free air quality achieved by high efficiency particulate filter(s) (HEPA H14 or ULPA U17)
- Optional carbon filter to protect samples from VOCs present in the laboratory room
- Class 5 air quality in the enclosure according ISO 14644-1



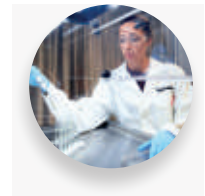
UV-C  
Germicidal lamp

- To sterilize the interior and contents before usage to prevent cross-contamination from the previous experiment
- This UV lamp switches off automatically is the operator opens the lower door by accident during decontamination



Easy to clean

- Work surface is easy to clean
- Seamless worktop with smooth corners (available in TRESPA®TopLab PLUS laminate or Stainless steel 304 L)
- Non-porous material

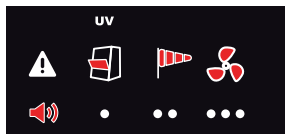


Ergonomic design

- 4 models available for your handlings with large openings for easy access to your work
- Slanted sash provides an ergonomic position for comfort and productivity
- High luminosity, internal LED lighting > 800 lux

## Simpler to use

- SMART technology informs users about their protection using light and sound.
- Light and sound pulses provide real time information indicating that :



- The sash is opened during UV decontamination
- Air face velocity is compromised: check sash, pre-filter or HEPA / ULPA filter.
- Fan failure has occurred.

- **The eGuard App** provides remote control to monitor the workstation, change the settings, and delivers safety alerts immediately to your mobile, tablet or PC device.

## Safer to operate

- ULPA U17 filters guarantee 99.999995% filtration efficiency for particles larger than 0.1µm. or HEPA H14 filters guarantee 99.995% filtration efficiency for particles larger than 0.1µm.
- Optional molecular filter for additional protection from fumes and vapors present in the laboratory air.
- Air quality in the enclosure complies with EN ISO 14644-1 ( Class 5 ) .
- The anemometer monitors a drop in pressure indicating that pre - filter or HEPA / ULPA filter replacement is required.

## Standard range

321



391



483



714



Model	321	391	483	714
External size (mm) ( L x W x H )	800 x 615 x 1106 - 1292	1005 x 615 x 1106 - 1292	1298 x 750 x 1332 - 1518	1819 x 750 x 1332 - 1518
Internal size (mm) ( L x W x H )	764 x 424 - 545 x 830	969 x 424 - 524 x 830	1172 x 648 - 653 x 1039	1697 x 648 - 653 x 1039





**GreenFumehoods**  
an alternative to  
ducted fume hoods



**Smart Fume Hoods**  
for your routine  
handlings



**Captair Smart**  
Weighing Stations



**Captair Smart**  
Storage cabinets



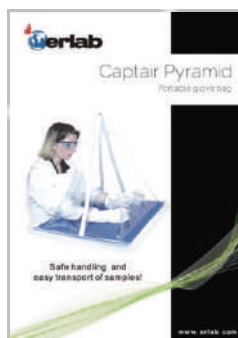
**Captair Store**  
Storage cabinets



**Captair Flow**  
Clean Air Enclosures



**Captair Bio**  
PCR Workstations



**Captair Pyramid**  
Portable Glovebox



**Halo**  
Laboratory Air  
Filtration system



**Halo Sense**  
Lab Air Quality Sensor

## Europe

### erlab D.F.S S.A.S (France)

Parc d'Affaires des Portes  
BP 403  
27104 Val de Reuil Cedex - France  
Tel. : +33(0)2 32 09 55 80  
Fax. : +33(0)2 32 09 55 90  
E-Mail : [Ventres@erlab.net](mailto:Ventres@erlab.net)

## North America

### erlab, Inc. (USA)

388 Newburyport Turnpike  
Rowley, MA 01969 - USA  
Tel. : +1(978) 948-2216  
Fax. : +1(978) 948-3354  
E-Mail : [CaptairSales@erlab.com](mailto:CaptairSales@erlab.com)

## Asia, Middle East, Africa, South America

### Kunshan erlab D.F.S Co.,Ltd

No.118 Feng Qin Rd.  
KETD Kunshan  
Jiangsu Province - China  
Tel. : +86 (0)512 5781 4085  
Fax. : +86 (0)512 5781 4082  
E-Mail : [Sales.china@erlab.com.cn](mailto:Sales.china@erlab.com.cn)

Your  distributor